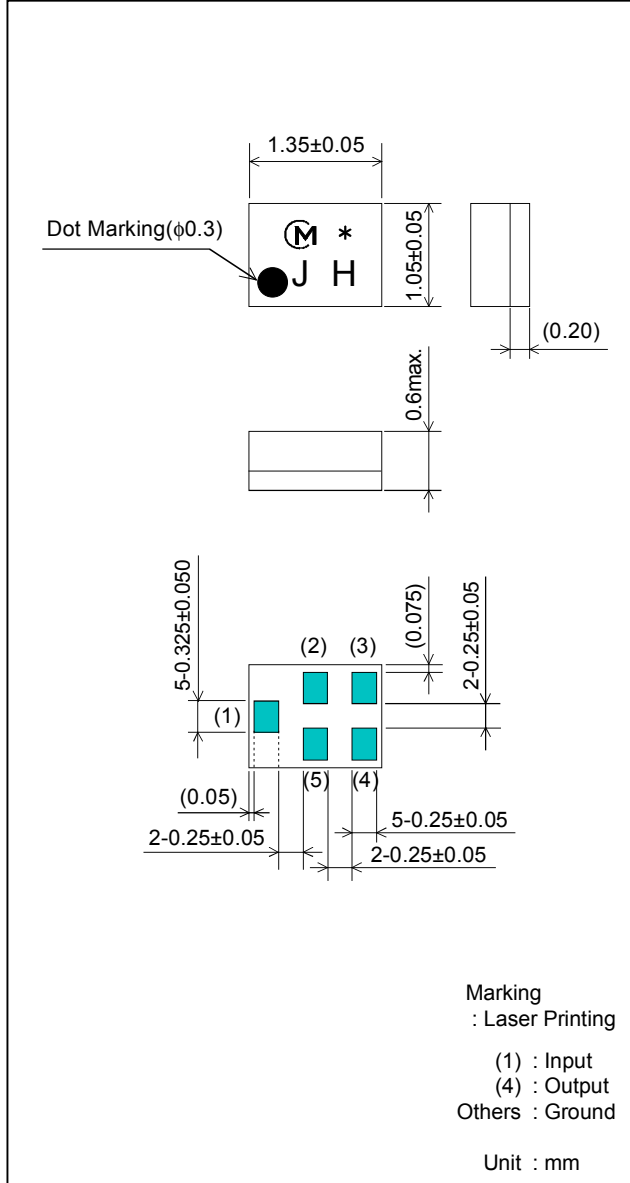


SAW FILTER FOR GPS

Murata part number :SAFEB1G57KB0F00

■ Package Dimensions



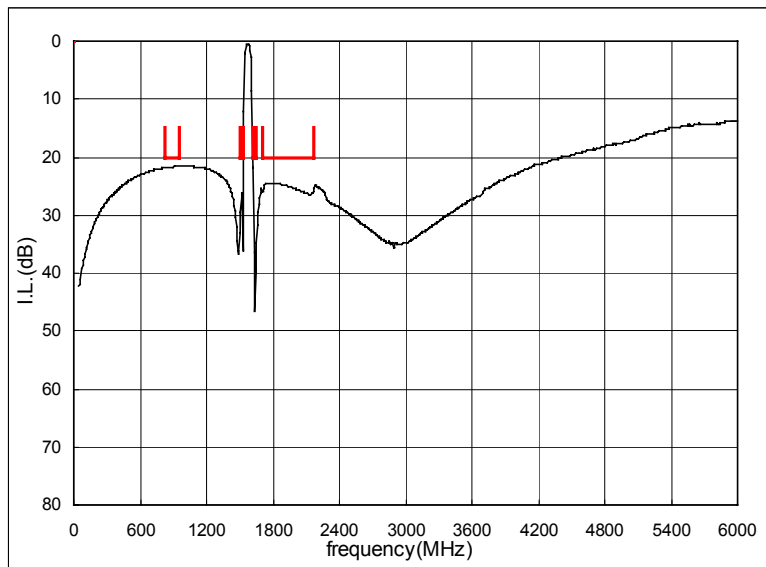
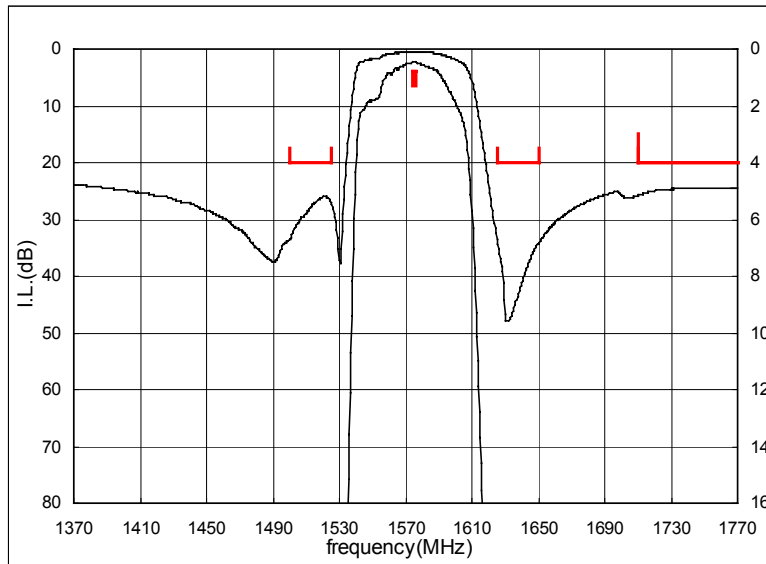
■ Specification

Item	Specification		
	-30 to 85°C	25±2°C	typ.
Nominal Center Frequency (fc)	1575.42MHz		
Insertion Loss (1574.22 to 1576.62MHz)	0.8 dB max.	0.6 dB max.	0.45 dB
Absolute Attenuation			
1) 824 to 960 MHz	20 dB min.	20 dB min.	21 dB
2) 1500 to 1525.42 MHz	20 dB min.	20 dB min.	26 dB
3) 1625.42 to 1650 MHz	20 dB min.	25 dB min.	34 dB
4) 1710 to 2170 MHz	20 dB min.	20 dB min.	24 dB
Ripple Deviation (1574.22 to 1576.62MHz)	0.5dB max.	0.5dB max.	0.02 dB
VSWR (1574.22 to 1576.62MHz)	2.0 max.	2.0 max.	1.1
Input/Output Impedance (nominal)	50Ω		
Input Signal Level	50mW (+17dBm), 2000 hours		

SAW FILTER FOR GPS

Murata part number :SAFEB1G57KB0F00

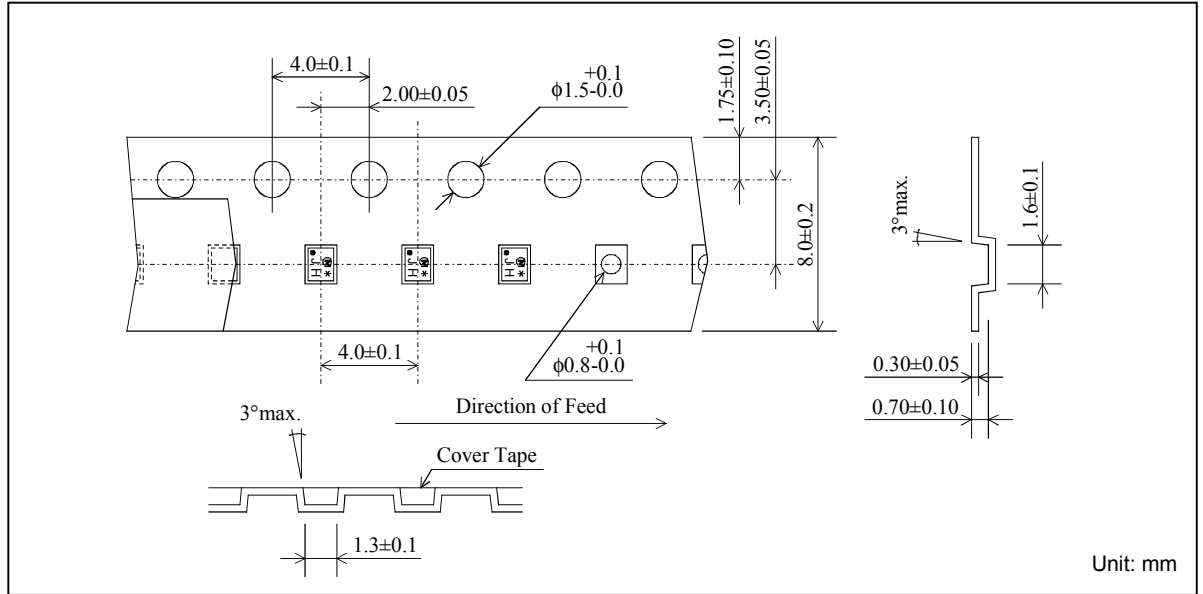
■ Frequency Performance



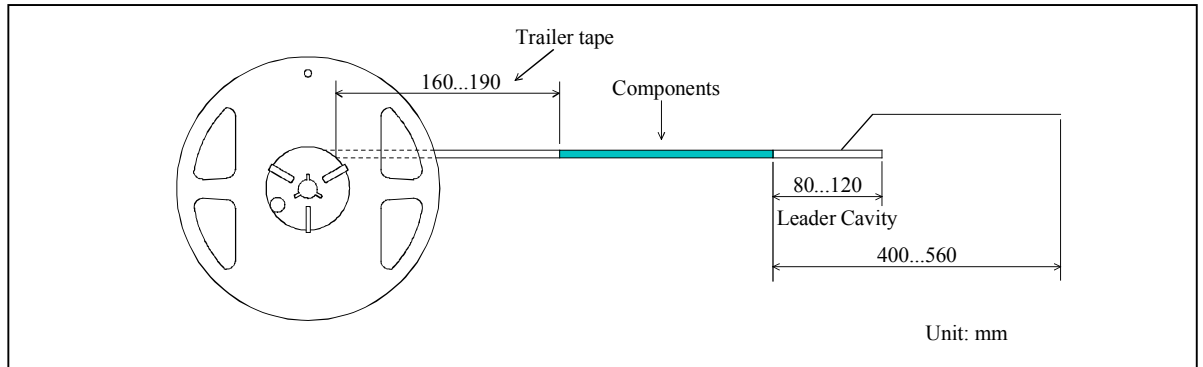
SAW FILTER FOR GPS

Murata part number :SAFEB1G57KB0F00

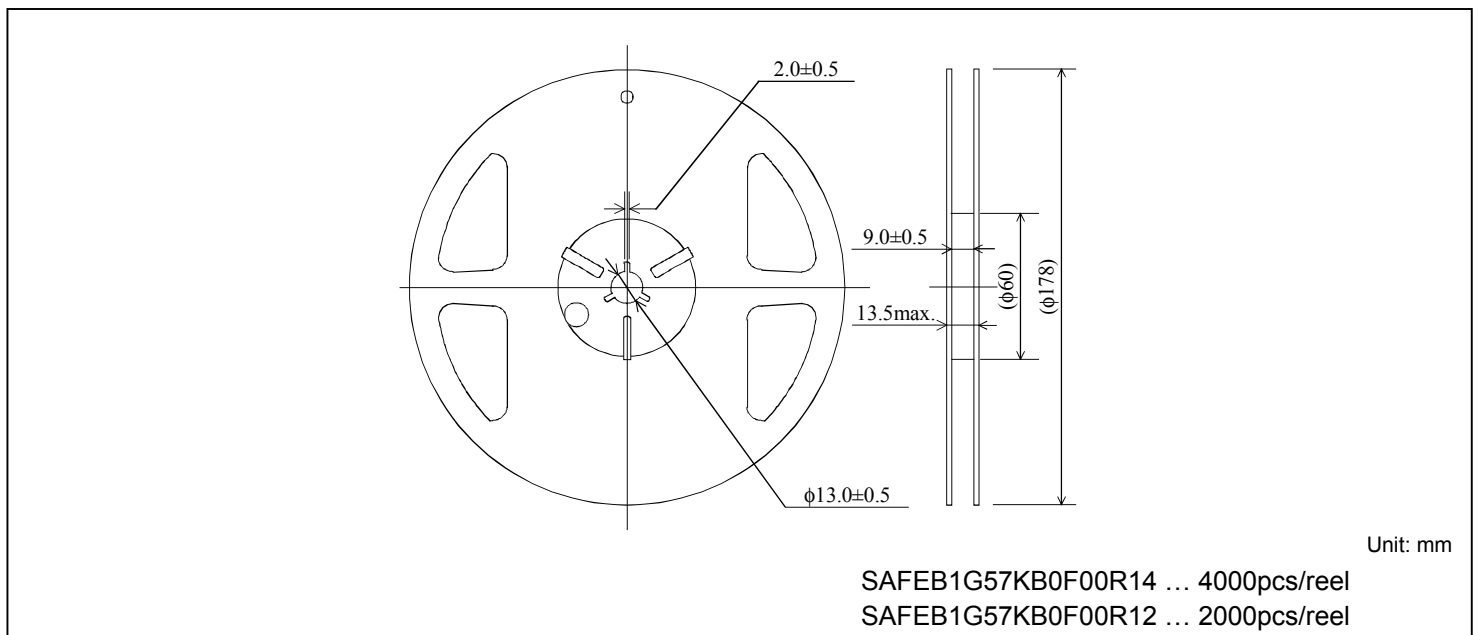
■ Dimensions of Carrier Tape



■ Dimensions of Tape



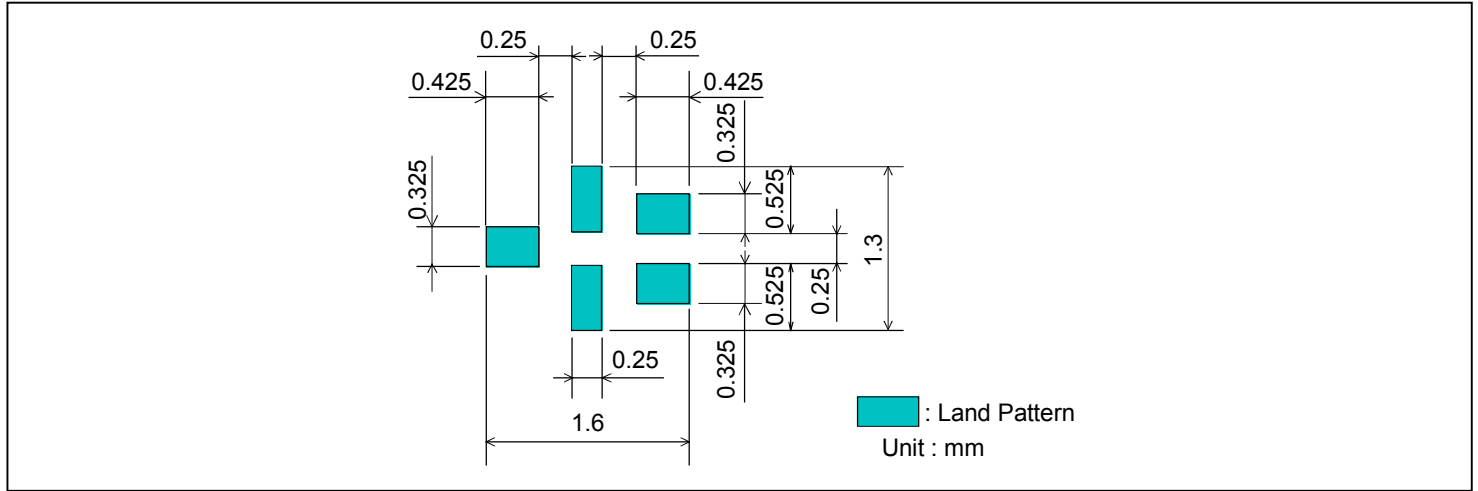
■ Dimensions of Reel



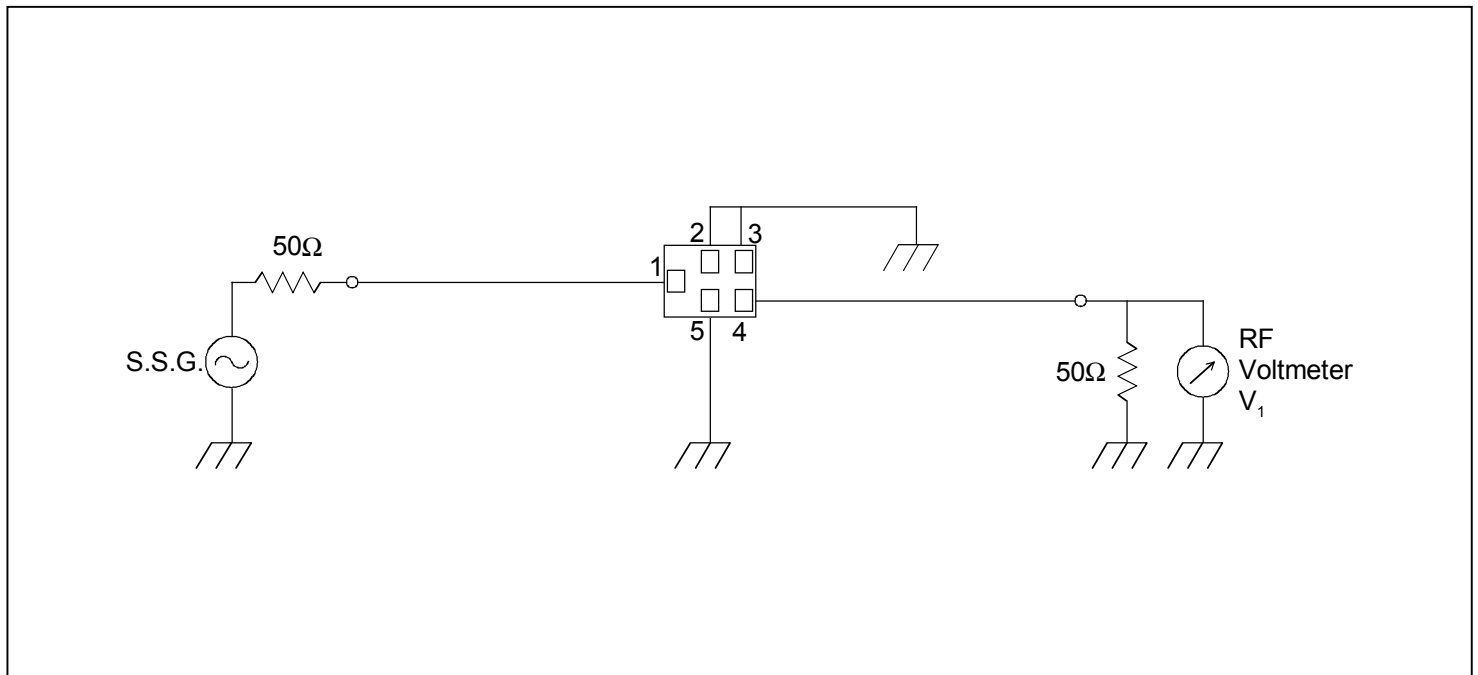
SAW FILTER FOR GPS

Murata part number :SAFEB1G57KB0F00

■ Recommended Land Pattern



■ Test Circuit



- This PDF Datasheet is downloaded from the website of Murata Manufacturing Co., Ltd. Therefore, it's specifications are subject to change or our products in it may be discontinued without advance notice. Please check with our sales representatives or product engineers before ordering.
- This PDF Datasheet has only typical specifications because there is no space for detailed specifications. Therefore, please approve our product specifications or transact the approval sheet for product specifications before ordering.